



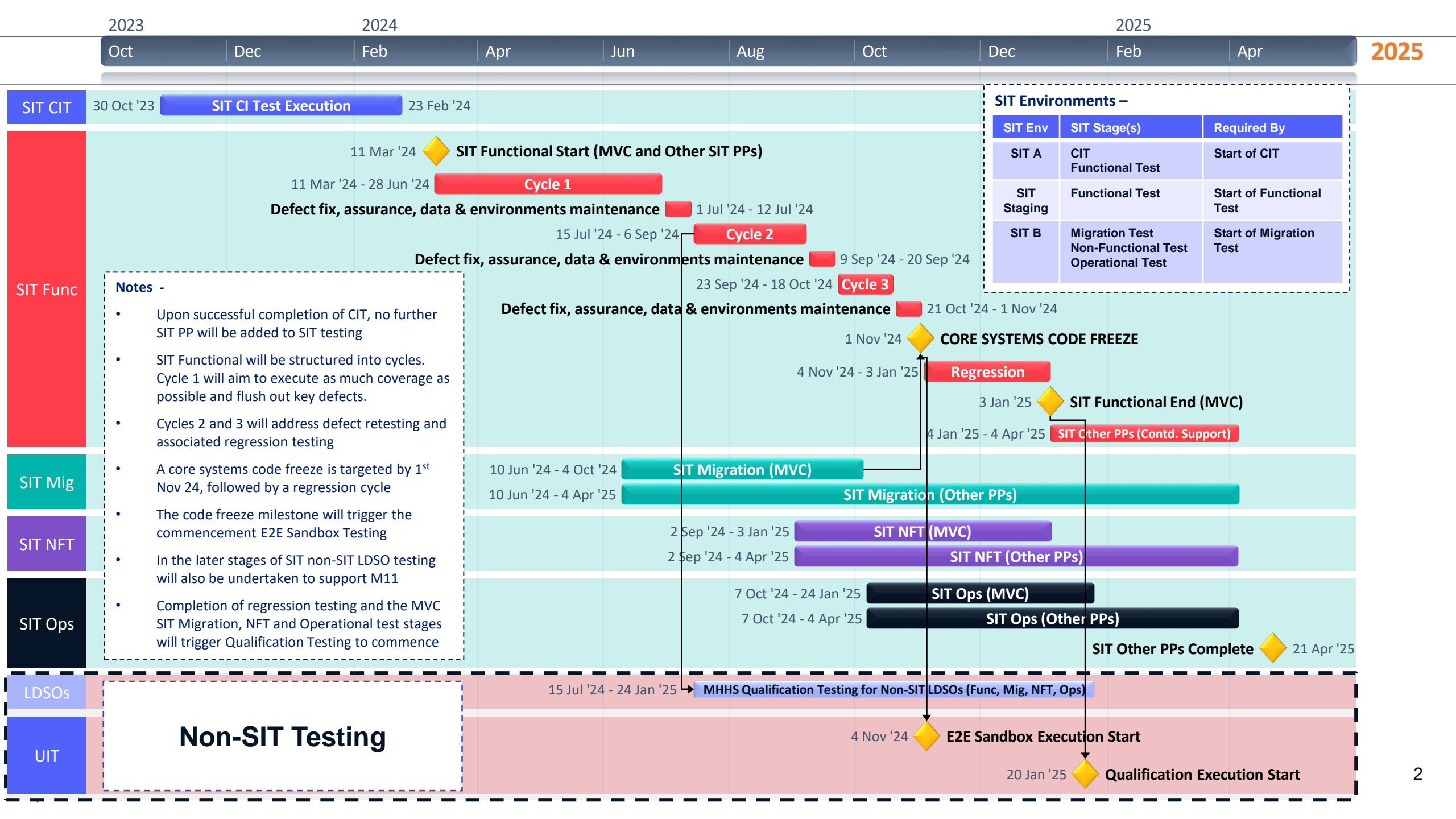
**MHHS
PROGRAMME**

Industry-led, Elexon facilitated

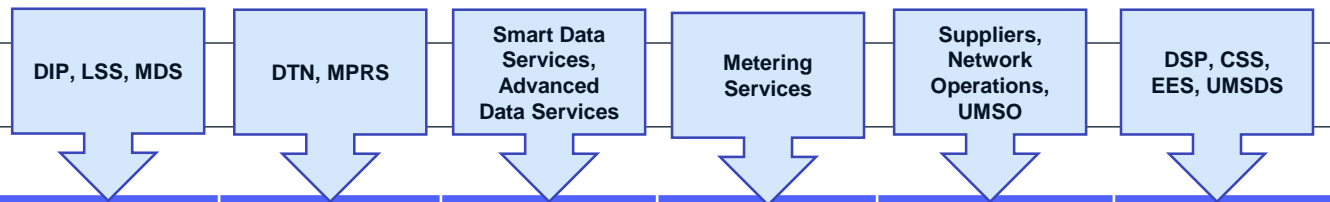
MHHS SIT PoaP

Version 2.0

MHHS-DEL 1034



PIT Completion / SIT Readiness in ref to PP SIT CIT Start



New guidance on readiness milestones based on the 'Interval' a PP is expected to enter SIT CIT:

Activity / Milestone	Notes	CIT Interval 1	CIT Interval 2	CIT Interval 3	CIT Interval 4	CIT Interval 5	CIT Interval 6
SIT CIT Start	CIT Interval 1 Start = PSG Milestone (M9)	30th Oct 23	13th Nov 23	27th Nov 23	11th Dec 23	15th Jan 24*	29th Jan 24
SIT CIT Ready to Start (TMAG Milestone)	TMAG Milestone - 1 week prior to CIT Start for each CIT Interval	23 rd Oct 23	6 th Nov 23	20 th Nov 23	4 th Dec 23	8 th Jan 24	22 nd Jan 24
SI Overarching CIT Test Readiness Report reviewed by SITWG / IPA	• 5 working days for review	13 th Oct 23	3 rd Nov 23	17 th Nov 23	1 st Dec	5 th Jan 24	19 th Jan 24
SI Issues Overarching CIT Test Readiness Report	<ul style="list-style-type: none"> SI releases report 2 weeks prior to 'SIT CIT Ready to Start' milestone for CIT Interval 1, allowing for review and mop up ahead of PSG (M9) SI releases iterated report 1 week prior to 'SIT CIT Ready to Start' milestone for CIT Intervals 2-6 	6 th Oct 23	27 th Oct 23	10 th Nov 23	27 th Nov 23	18 th Dec 23	15 th Jan 24
PP CIT Test Readiness Reports Assured by SI	5 working days for review	6 th Oct 23	27 th Oct 23	10 th Nov 23	24 th Nov 23	15 th Dec 23	12 th Jan 24
PPs Issue CIT Test Readiness Reports		29 th Sep 23	20 th Oct 23	3 rd Nov 23	17 th Nov 23	8 th Dec 23	5 th Jan 24
Test Data Load and Verification Complete	Period of 4 weeks prior to PP CIT Test Readiness Report	29 th Sep 23	20 th Oct 23	3 rd Nov 23	17 th Nov 23	8 th Dec 23	5 th Jan 24
MHHS code deployed to SIT PPs' envs	Period of 2 weeks prior to PP CIT Test Readiness Report	29 th Sep 23	20 th Oct 23	3 rd Nov 23	17 th Nov 23	8 th Dec 23	5 th Jan 24
Environment Connectivity Proving Complete	This has been reduced from 8 weeks to 4 weeks	29 th Sep 23	20 th Oct 23	3 rd Nov 23	17 th Nov 23	8 th Dec 23	5 th Jan 24
SIT PPs' envs ready to start connectivity proving (incl certs)		1 st Sep 23	22 nd Sep 23	6 th Oct 23	20 th Oct 23	10 th Nov 23	24 th Nov 23
PP Final PIT Completion Reports assured by SI	5 working days for review	6 th Oct 23	27 th Oct 23	10 th Nov 23	24 th Nov 23	15 th Dec 23	12 th Jan 24
PPs Issue Final PIT Completion Report	Final report allowing for any test completion delta	29 th Sep 23 (No later than**)	20 th Oct 23 (No later than**)	3 rd Nov 23 (No later than**)	17 th Nov 23 (No later than**)	8 th Dec 23 (No later than**)	5 th Jan 24 (No later than**)
Draft PIT Completion Reports assured by SI		29 th Sep 23	20 th Oct 23	3 rd Nov 23	17 th Nov 23	8 th Dec 23	5 th Jan 24
PPs Issue Draft PIT** Completion Report	A draft of the PIT test completion report to be submitted no later than 15 working days before the planned end of test execution	8 th Sep 23 (No later than**)	29 th Sep 23 (No later than**)	13 th Oct 23 (No later than**)	27 th Oct 23 (No later than**)	17 th Nov 23 (No later than**)	1 st Dec 23 (No later than**)

Note 1* – There is an extended period between CIT Intervals 4 and 5 allowing for the Xmas and New Year period. Some readiness dates have also been adjusted accordingly for CIT Intervals 5 and 6.

Note 2** – SI Test Team will agree timelines for prior PIT deliverables with individual SIT PPs in line with their delivery plans, allowing for test assurance activities in the lead up to SIT