



MHHS
PROGRAMME

Industry-led, Elexon facilitated

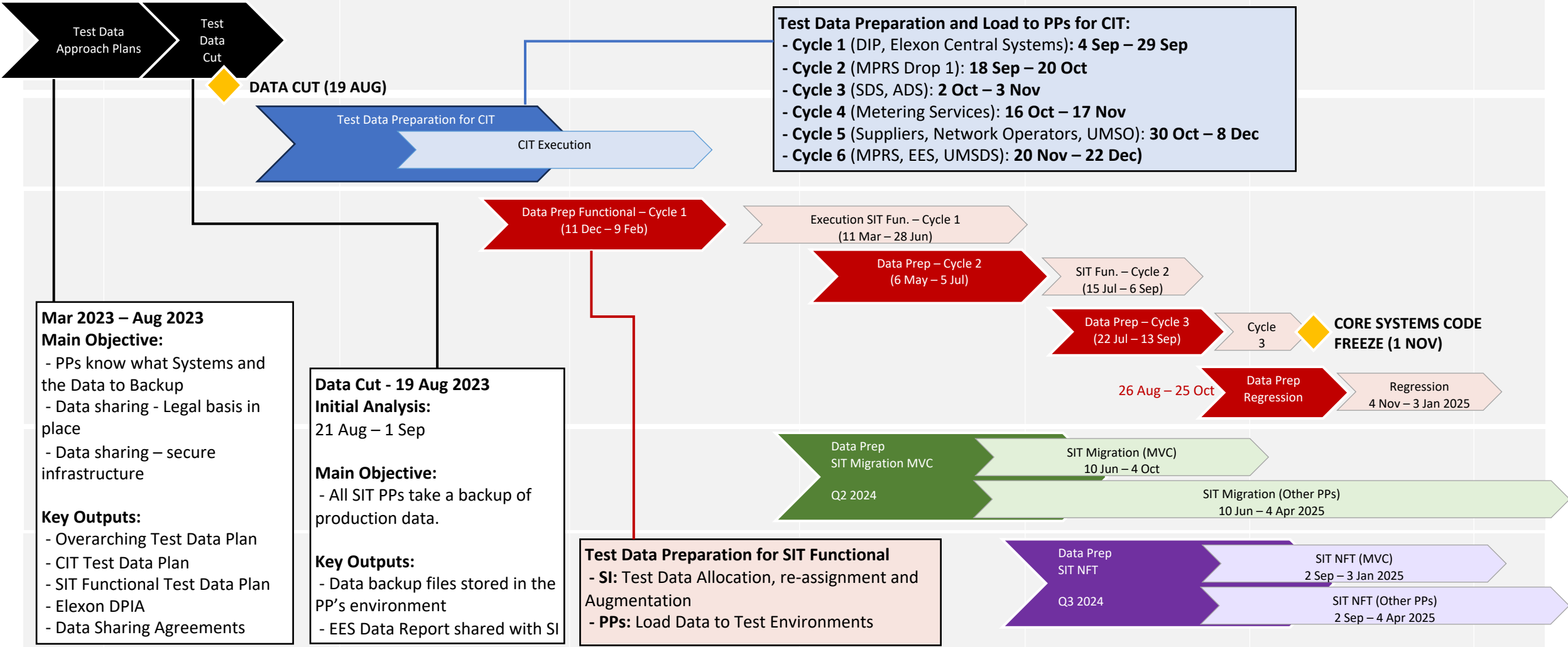
CIT Interval 4 group meeting

MHHS DEL-1856

Agenda

1. The schedule for data in CIT
2. SFTP requirements
3. Data and example messages
4. The loading and review of the data
5. Q&A session on data for Interval 3 testing

Test Data – Plan on a Page – SIT (CIT, Functional, Migration and NFT)



Mar 2023 – Aug 2023
Main Objective:

- PPs know what Systems and the Data to Backup
- Data sharing - Legal basis in place
- Data sharing – secure infrastructure

Key Outputs:

- Overarching Test Data Plan
- CIT Test Data Plan
- SIT Functional Test Data Plan
- Elexon DPIA
- Data Sharing Agreements

Data Cut - 19 Aug 2023
Initial Analysis:
 21 Aug – 1 Sep

Main Objective:

- All SIT PPs take a backup of production data.

Key Outputs:

- Data backup files stored in the PP’s environment
- EES Data Report shared with SI

Test Data Preparation for SIT Functional

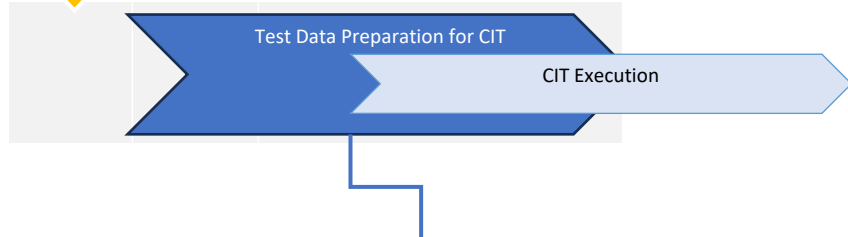
- **SI:** Test Data Allocation, re-assignment and Augmentation
- **PPs:** Load Data to Test Environments

* It does not show the SIT Operational Testing after Non-Functional Testing

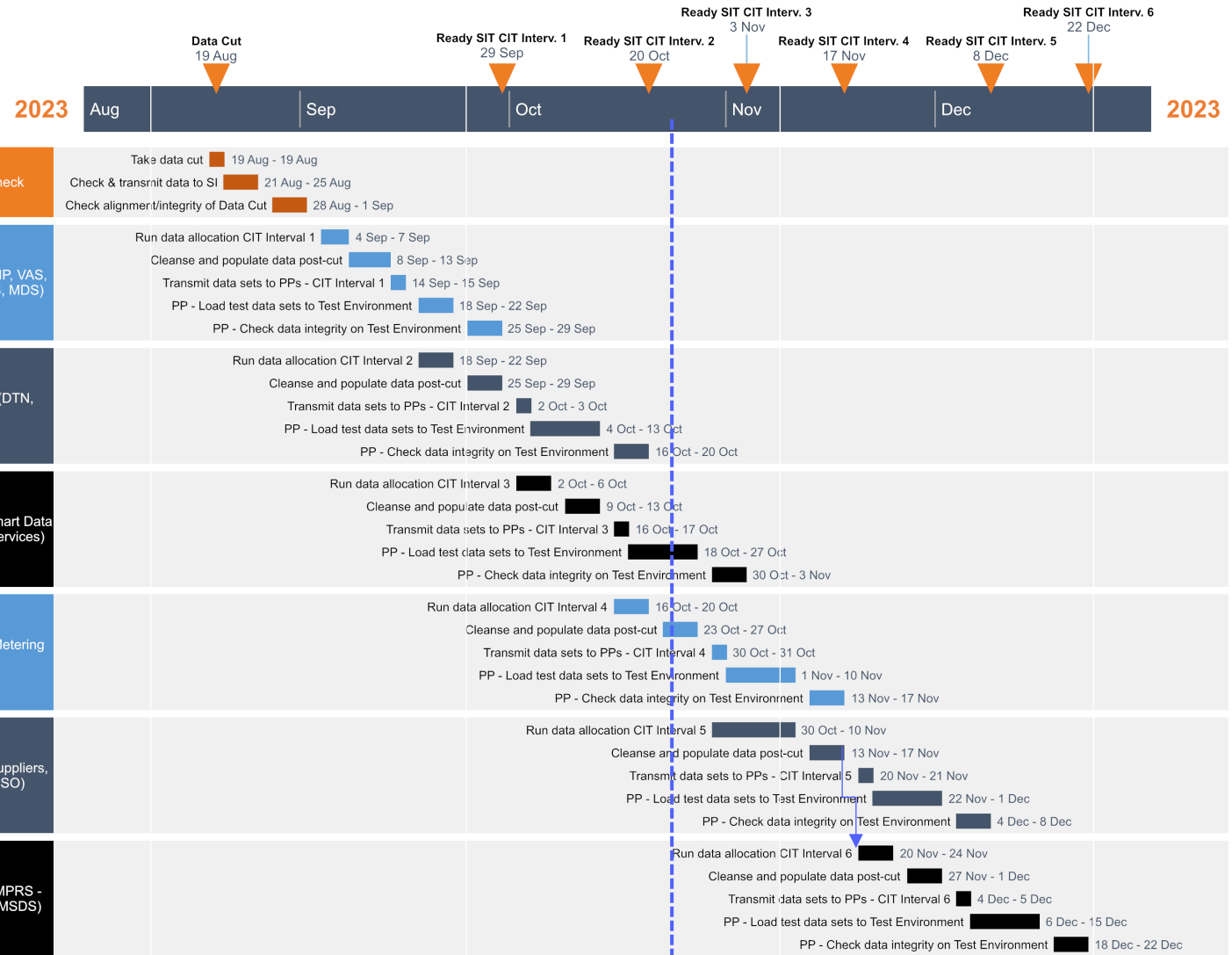
Work Plan – CIT Test Data Preparation detailed schedule

| 2023 | | | | | 2024 | |
|------|-----|-----|-----|-----|------|-----|
| Ago | Sep | Oct | Nov | Dec | Jan | Feb |

DATA CUT (19 AUG)



- Test Data Preparation and Load to PPs for CIT:**
- **Cycle 1 (DIP, Exelon Central Systems): 4 Sep – 29 Sep**
 - **Cycle 2 (MPRS Drop 1): 18 Sep – 20 Oct**
 - **Cycle 3 (SDS, ADS): 2 Oct – 3 Nov**
 - **Cycle 4 (Metering Services): 16 Oct – 17 Nov**
 - **Cycle 5 (Suppliers, Network Operators, UMISO): 30 Oct – 8 Dec**
 - **Cycle 6 (MPRS, EES, UMISO): 20 Nov – 22 Dec**



Today

Detailed Schedule for Participants

2023

2024

DIP Elexon, Central systems

CIT Interval 1

- Data sent 22 Sep
- Data loaded and checked 29 Sep
- Start CIT 30 Oct

MPRS Drop 1

CIT Interval 2

- Data sent 03 Oct
- Data loaded and checked 20 Oct
- Start CIT 13 Nov

SDS, ADS

CIT Interval 3

- Data sent 17 Oct
- Data loaded and checked 03 Nov
- Start CIT 27 Nov

Metering services

CIT Interval 4

- Data sent ~~31 Oct~~ 7th Nov
- Data loaded and checked 17 Nov
- Start CIT 11 Dec

Suppliers, Network Operators, UMSO

CIT Interval 5

- Data sent 21 Nov
- Data loaded and checked 08 Dec
- Start CIT 15 Jan

MPRS, EES, UMSDS

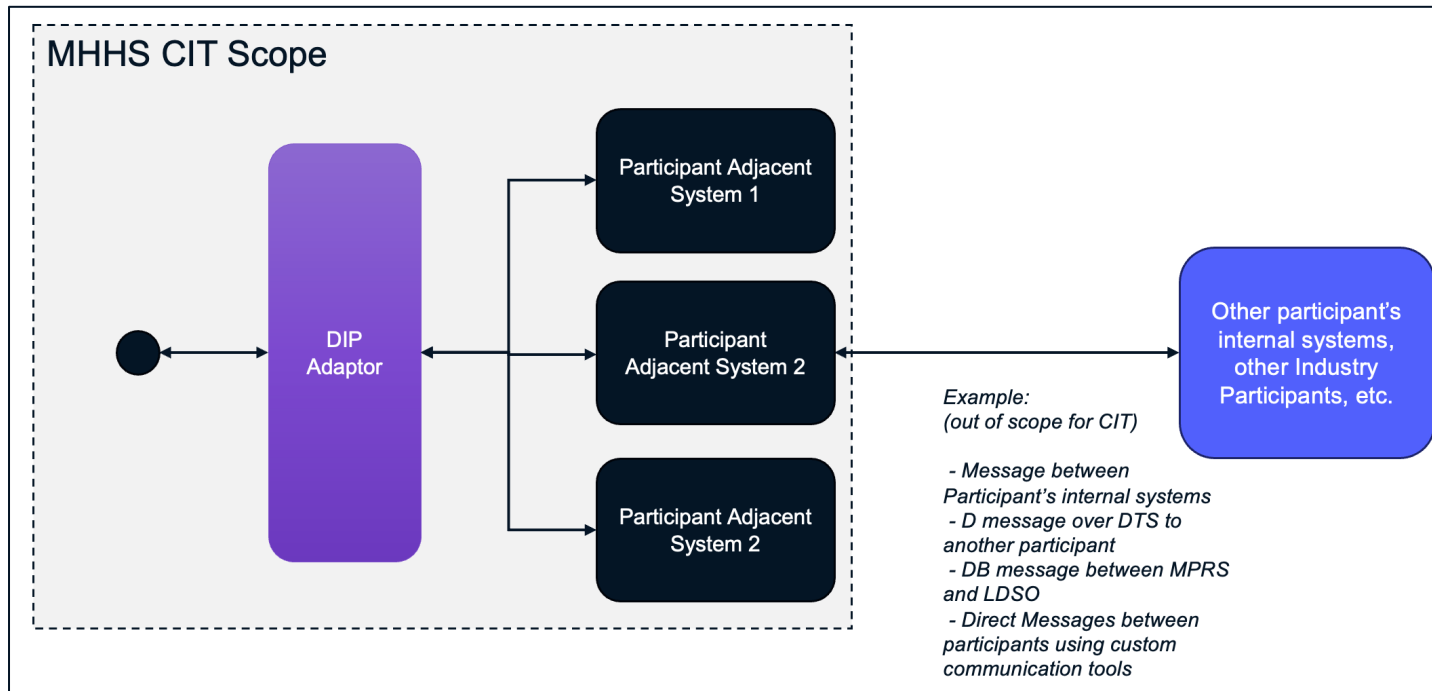
CIT Interval 6

- Data sent 05 Dec
- Data loaded and checked 22 Dec
- Start CIT 29 Jan

- SFTP connections need to be set up to enable Delivered data to be accessed.
- Please ensure Public keys are created and sent back to data team
- Test SFTP connection prior to data sent date
- Data team will work with you to resolve SFTP issues.
- Short calls can be set to resolve connection issues
- Bilaterals will be held to review progress

Note: Real MPAN data only to be sent via SFTP no email.

Test Data and Messages you will receive



NOTE: CIT will evaluate the DIP interfaces, integration and routing. It won't evaluate the functional processing of the messages.

The scope of SIT Component Integration is:

1. For all Roles interfacing with the DIP:
 - I. **Verify the ability to download the Industry Standing Data** for each Participant within MHHS Architecture.
 - II. **Verify the ability to send/receive IF/PUB** for each individual Participant within MHHS Architecture.
2. For the DIP:
 - i. **Verify DIP routing**

Test Data and Messages you will receive

| Market Participant Role | Estimated number of MPANs per PP | Transfer format for initial population (data sent by SI) | Key MPAN Data Augmented by SI | Augmented Data provided by | Notes |
|--------------------------------|---|---|--|-----------------------------------|---|
| Metering Service | 300 | PUB-033, PUB-036 | <ul style="list-style-type: none"> - Supplier Registration (MPID, DIP ID) - Data Service Appointment (MPID/DIPID) - Metering Service appointment (MPID/DIPID) | 07 Nov 2023 | - The Metering Services shall pre-load the Test Environment with the data backup (Meter Technical Details). |

Content of IF/PUBs:

- **Data Service:** MHHS Pseudo Company
- **Meter Service:** Metering Service Participant
- **Supplier:** MHHS Pseudo Company
- **Distributor:** SOUT or ETCL
- **MDR (For Smart Meters):** MHHS Pseudo Company

Review IF/PUB and CSV files...

Q&A